

WATER PROOF

F A C I N G R E A L I T Y



2012
PRODUCT CATALOG



Welcome To Waterproof.

FREQUENTLY IMITATED - NEVER COPIED

PRODUCT FACTS

Waterproof's award-winning innovative design, revolutionary features and high-quality now in a Sport Series.

The Sport Series consists of the W30 fullsuit, W30 Shorty, and R30 rashguards.

- 2.5mm CR neoprene backzip fullsuit with Aquatex
- 3-D anatomical sculpting
- Flatlock stitching
- Embossed shoulder, wrist and seat areas
- Polyurethane kneepads
- Neck Tab with microteeth
- Extra long YKK back zipper
- Optional Tech accessory pocket (sold separately)
- Color: Black

Sizes:

Standard: 3XS, 2XS, XS, S, M, ML, L, XL, 2XL, 3XL

US Item:

Male: WP-W30M

Female: WP-W30F



ACCESSORY POCKET



ACCESSORY POCKET
UNZIPPED



EMBOSSED SHOULDER



VELCRO NECK TAB



DOCKING STATION



ANTI-SLIP WRIST

PRODUCT FACTS

Waterproof's award-winning innovative design, revolutionary features and high-quality now in a Sport Series.

The Sport Series consists of the W30 fullsuit, W30 Shorty and R30 rashguards.

- 2.5mm CR neoprene backzip shorty with Aquatex
- 3-D anatomical sculpting
- Flatlock stitching
- Embossed shoulder and seat areas
- Neck Tab with microteeth
- Extra long YKK back zipper
- Color: Black

Sizes:

Standard: 3XS, 2XS, XS, S, M, ML, L, XL, 2XL, 3XL

US Item:

Male: WP-W30SM

Female: WP-W30SF



ANATOMIC SCULPTING



EMBOSSED NON-SLIP SEAT



EMBOSSED SHOULDER



VELCRO NECK TAB



YKK STAINLESS ZIPPER



2.5MM AQUATEX

PRODUCT FACTS

Waterproof's award-winning innovative design, revolutionary features and high-quality now in a Sport Series.

The Sport Series consists of the W30 fullsuit, W30 Shorty and R30 rashguards.

- 8oz Lycra available in Long and Short sleeve
- SPF 50 protection
- Ideal for pool, beach, boat or under wetsuit
- Flatlock stitching
- Color: Black

Sizes:

Standard: 3XS, 2XS, XS, S, M, L, XL
2XL, 3XL

US Item:

Male L/S: WP-R30M
Female L/S: WP-R30F

Male S/S: WP-R30SM

Female S/S: WP-R30SF



R30 FEMALE BACK VIEW



R30 MALE BACK VIEW

W2 5/7mm



7mm colors



THE LEGEND

Designing a unique wetsuit after the W1 proved to be a challenge, but the result is the full-featured W2 model available in 5mm or 7mm.

The W2 fullsuit can be used in combination with either a hooded icevest, hooded undervest or a separate hood, thus catering to most divers and most situations.

W2 Features:

- 3-D Sculpted Suit - 3-D anatomically designed suit with pre-bent arms, legs and panels for superior fit.
- HexTex Lining - Dense knitted plush with a unique hexagonal pattern that restricts internal waterflow and increases comfort.
- High quality Microcell CR Neoprene for durability and warmth.
- Generous double seals made from glide skin neoprene with zipper at arms and legs.
- SpinePad - 10mm thick and designed for additional protection to the back area.
- Kneepads - 3-D molded vulcanized rubber kneepads with the "hinge effect".
- ZipperSeal - Open cell neoprene on each side of zipper for the ultimate dry seal.
- Wave flex panels in the hollow of arms and legs.
- Back YKK zipper with stretch panels for enhanced flexibility.
- Front gusseted neck zipper for surface comfort.
- Wrist Computer Anti-Slip - Provides an anti-slip section to mount a wrist computer.



FEATURES AND DETAILS



FORM MOLDED VELCRO TABS
Quality is in all the details. New molded TPU (eco) teeth, sticks only to the assigned Velcro part.



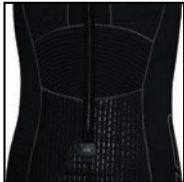
COMFORT ZIPPER
Fully gusseted "comfort Zipper" to relieve stress on the surface.



SPINEPAD
10mm thick and pre-shaped to fit neck area.



EMBOSSSED ELBOW
Embossed elbow protection with Toughtex abrasion resistance.



STRETCH PANEL
Form fitting wave flex back panel.



3-D SCULPTED SUIT
With pre-bent arms and legs for superior anatomical fit.



KNEEPAD
3-D molded vulcanized rubber kneepads. Note the unique design that enables unrestricted leg movements via the "hinge effect".



GENDER SPECIFIC STYLING
Provides comfortable lift and support.



HINGE EFFECT
Knee pad constructed to follow the leg movements.



BRONZE SLIDER
Provides consistent ease of operation and hard-core durability.



REINFORCED SHOULDERS
Critical area abrasion and anti-slip protection.



HEXTEX INNER LINING
A new lining material that slows water movement for enhanced warmth and increased comfort.



HIGH VISIBILITY
Reflective logo on the sleeve.



A SEAT THAT GRIPS
Polyurethane embossing provides a non-slip grip and abrasion protection.



DOUBLE SEALS
Generous double seals made from glide skin neoprene with zipper at arms and legs reduces water exchange.

US ITEM:

Models:

WP-W25M (5mm Male)
WP-W25F (5mm Female)

WP-W27M (7mm Male)
WP-W27F (7mm Female)

AVAILABLE SIZES:

Male:

STANDARD: 2XS, XS, S, M, ML, L, XL, 2XL
TALL: 2XST, XST, ST, MT, MLT, LT, XLT, 2XLT
PLUS: M+, L+, XL+, 2XL+, 3XLT+
SHORT PLUS: MS+, MLS+, LS+, XLS+, 2XLS+

Female:

STANDARD: 2XS, XS, S, M, ML, L, XL, 2XL
TALL: 2XST, XST, ST, MT, MLT, LT, XLT, 2XLT
PLUS: M+, L+, XL+
SHORT PLUS: MS+, MLS+, LS+, XLS+, 2XLS+

ACCESSORIES



W Series Overvest

An anatomically designed overvest that combines 5mm of superior grade neoprene with specially woven I-Span lining, matched with the H1 hood with HAVS technology.



U1 UnderVest

An anatomically designed 2mm undervest matched with the H1 hood with HAVS technology. Ideal for an added layer underneath the wetsuit.



**G1 3mm 5-finger
G1 5mm 5-finger**

- 3-D shaped
- Glideskin seal
- Pre bent fingers
- Extra long YKK zipper
- Palm Antislip grip
- I-Span superstretch nylon
- Bonded Hi-Quality Nylon thread



**H1 Hood 3/5mm
H1 Hood 5/7mm**

- 3-D shaped
- Glideskin seal
- HAV system (double vents)
- I-Span superstretch nylon
- Bonded Hi-Quality Nylon thread



B1 Boots

6.5mm semi-dry boots with an extra long zipper for easy donning. The heels and toes are strengthened and the boot has an angled design for less stress while finning.

W3 3.5mm



THE LEGEND

The W3 is not an average warm water wetsuit.

When your backyard is the Arctic Circle you know that short cuts do not pay – Waterproof delivers premium design and quality in every suit made from the Arctic capable drysuits to the W1, W2 and to the tropical W3.

The W3 features Waterproof's unique design cues like gender specific fit and sharp Scandinavian styling. Additionally, included are several of the features from our heavier lines like a gusseted neck relief zipper, wrist and ankle seals and 3-D sculpted construction.

W3 Features:

- 3-D Sculpted Suit - 3-D anatomically designed suit with pre-bent arms, legs and panels for superior fit.
- HexTex Lining - Dense knitted plush with a unique hexagonal pattern that restricts internal waterflow and increases comfort.
- High quality Microcell CR Neoprene for durability and warmth.
- Generous double seals made from neoprene with zipper at arms and legs.
- Front gusseted neck zipper for surface comfort.
- Knee Guards - PU embossed.
- ZipperSeal - Open cell neoprene on each side of zipper for the ultimate dry seal.
- Wave flex panels in the back, arms and legs for enhanced flexibility and freedom of movement.
- Back zipper with stretch panels for enhanced flexibility.
- A Seat that Grips – Polyurethane embossing in the back provides a non-slip grip and integrated abrasion protection.
- Embossed elbow protection.
- Back zipper with YKK KA Bronze slider.
- No restraining seams at the arms and legs.



FEATURES AND DETAILS



A SEAT THAT GRIPS
Polyurethane embossing provides a non-slip grip and abrasion protection.



NECKTAB
Quality is in the details. New TPU (eco) tab with molded velcro hooks, sticks only to the assigned Velcro part.



REINFORCED SHOULDERS
Critical area abrasion and anti-slip protection.



HEXTEX INNER LINING
A new lining material that slows water movement for enhanced warmth and increased comfort.



WAVE FLEX PANEL
In hollow of arms and legs for increased flexibility.



DOUBLE SEALS
Wrist and ankle seals to minimize water exchange. YKK high quality zippers on both legs and arms.



PU KNEE GUARD
Polyurethane reinforced knee and shin guards.



GENDER SPECIFIC STYLING
Provides comfortable lift and support.



3-D SCULPTED SUIT
With pre-bent arms and legs for superior anatomical fit.

US ITEM:

Models:
WP-W33M (Male)
WP-W33F (Female)

AVAILABLE SIZES:

Male:
STANDARD: 2XS, XS, S, M, ML, L, XL, 2XL, 3XL
TALL: 2XST, XST, ST, MT, MLT, LT, XLT, 2XLT
PLUS: M+, L+, XL+, 2XL+, 3XLT+

Female:
STANDARD: 2XS, XS, S, M, ML, L, XL, 2XL
TALL: 2XST, XST, ST, MT, MLT, LT, XLT, 2XLT
PLUS: M+, L+, XL+

ACCESSORIES



U1 UnderVest

An anatomically designed 2mm undervest matched with the H1 hood with HAVS technology. Ideal for an added layer underneath the wetsuit.



G1 1.5mm 5-finger G1 3mm 5-finger

- 3-D shaped
- Glideskin seal
- Pre bent fingers
- Extra long YKK zipper
- Palm Antislip grip
- I-Span superstretch nylon
- Bonded Hi-Quality Nylon thread



H1 Hood 3/5mm

- 3-D shaped
- Glideskin seal
- HAV system (double vents)
- I-Span superstretch nylon
- Bonded Hi-Quality Nylon thread



B1 Boots

6.5mm semi-dry boots with an extra long zipper for easy donning. The heels and toes are strengthened and the boot has an angled design for less stress while finning.

W1 5/7mm



reddot design award
best of the best 2009



THE GRAND AWARD OF DESIGN
BY THE ASSOCIATION OF SWEDISH ENGINEERING INDUSTRIES



THE LEGEND

Building on over 25 years of experience in the design and manufacturing of extreme exposure products, Waterproof set out to redefine the wetsuit. Born from this lofty goal was the W1.

The W1 is available in 5mm and 7mm models for both females and males. The suit features a new 3-D anatomical front-zip design, revolutionary HexTex Core Insulation Protection, Neck Water Dam, and several other unique features.

Launched in Europe in Spring 2009, the W1 immediately realized success by winning the Red Dot Design Award and soon after The Grand Award of Design.

W1 Features:

- **Front Zip Design** – The W1 is designed with a contoured front YKK #10 zipper to enhance comfort and flexibility.
- **3-D Sculpted Suit** - 3-D anatomically designed suit with pre-bent arms, legs and panels for superior fit.
- **HexTex Lining** - Dense knitted plush with a unique hexagonal pattern that restricts internal waterflow and increases comfort.
- **Hi-Dense Microcell CR Neoprene and I-Span outer lining** - more stretch and durability without sacrificing thermal properties.
- **Water Dam** - A high neck seal that prevents waterflow into the suit during neck movement.
- **Generous double seals** made from glide skin neoprene with zipper at arms and legs.
- **Computer Strap Anchor** - Provides a secure mounting position for a wrist computer.
- **SpinePad** - 11mm thick and designed for additional protection to kidney and spine areas.
- **Kneepads** - 3-D molded vulcanized rubber kneepads with the “hinge effect”. Mounted on DuraTex fabric.
- **ZipperSeal** - Open cell neoprene on each side of zipper for the ultimate dry seal.



FEATURES AND DETAILS



WATERDAM
A unique newly designed high neck seal that prevents water flow into the suit during neck movement.



DOUBLE SEALS
Generous double seals made from glide skin neoprene with zipper at arms and legs reduces water exchange.



SIDE ZIPPER
The opening is positioned at the side of neck to enhance comfort and flexibility for the neck.



3-D SCULPTED SUIT
With pre-bent arms and legs for superior anatomical fit.



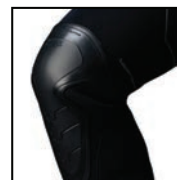
EMBOSSED ELBOW
Embossed elbow protection with Toughtex abrasion resistance.



ZIPPER PULLER
Very good grip, with or without gloves, to open and close the YKK #10 zipper. The flat design makes it disappear when not in use.



MULTI OPTIONAL PLATFORM
Multi Optional Platform. A unique gadget that holds Waterproof micro compass.



KNEEPAD
3-D molded vulcanized rubber kneepads. Note the unique design that enables unrestricted leg movements via the "hinge effect".



HEXTEX INNER LINING
A new lining material that slows water movement for enhanced warmth and increased comfort.



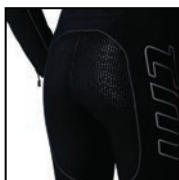
NECKTAB HOLDER
A unique holder to open the suit while on the surface or boat.



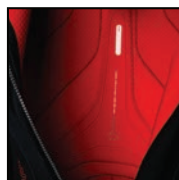
FORM MOLDED VELCRO TAB
Quality is in the details. New molded TPU (eco) teeth, stick only to the assigned Velcro area.



GENDER SPECIFIC STYLING
Provides comfortable fit and support.



A SEAT THAT GRIPS
Polyurethane embossing provides a non-slip grip and abrasion protection.



SPINEPAD
11mm thick pad features additional protection to the kidney and spine areas.



COMPUTER STRAP ANCHOR
To prevent the computer from slipping off your arm when gloves are removed or suit is compressed. The antislip surface makes the computer to stay in place.



ZIPPER SEAL
Open cell and closed cell neoprene on opposite sides of the zipper for the ultimate dry seal.



WAVE FLEX PANEL
In hollow of arms and legs for increased flexibility.



HIGH VISIBILITY
Reflective logo on the neck.

US ITEM:

Models:

WP-W15M (5mm Male)
WP-W15F (5mm Female)

WP-W17M (7mm Male)
WP-W17F (7mm Female)

AVAILABLE SIZES:

Male:

STANDARD: 2XS, XS, M, ML, L, XL, 2XL
TALL: 2XST, XST, ST, MT, MLT, LT, XLT, 2XLT
PLUS: L+, XL+, 2XL+, 3XLT+

Female:

STANDARD: 2XS, XS, S, M, ML, L, XL, 2XL
TALL: 2XST, XST, ST, MT, MLT, LT, XLT, 2XLT
PLUS: M+, L+, XL+

ACCESSORIES



W Series Overvest

An anatomically designed overvest that combines 5mm of superior grade neoprene with specially woven I-Span lining, matched with the H1 hood with HAVS technology.



U1 UnderVest

An anatomically designed 2mm undervest matched with the H1 hood with HAVS technology. Ideal for an added layer underneath the wetsuit.



G1 3mm 5-finger G1 5mm 5-finger

- 3-D shaped
- Glideskin seal
- Pre bent fingers
- Extra long YKK zipper
- Palm Antislip grip
- I-Span superstretch nylon
- Bonded Hi-Quality Nylon thread



H1 Hood 3/5mm H1 Hood 5/7mm

- 3-D shaped
- Glideskin seal
- HAV system (double vents)
- I-Span superstretch nylon
- Bonded Hi-Quality Nylon thread



B1 Boots

6.5mm semi-dry boots with an extra long zipper for easy donning. The heels and toes are strengthened and the boot has an angled design for less stress while finning.

THE LEGEND

The SD Combat bridges the gap between a drysuit and a wetsuit. Dry enough to keep the diver warm in colder water, yet still with the snug fit and features of a high-class wetsuit.

A 7mm all black combat style suit with two expandable POWER POCKETS on the thighs, worn by the Swiss Army and the Portuguese Marine forces.

SD Combat Features:

- 7mm high quality Microcell CR Neoprene for durability and warmth.
- Laminated SD Toughtex nylon coating on elbow and knee areas.
- Anatomic Sculpting – with 3-D sculpted arms and legs the SD Combat provides an anatomical fit designed for ease of movement.
- Armored Dry Zipper - A heavy-duty neoprene cover protects the dry zipper from excess wear.
- Generous double seals made from glide skin neoprene with zipper at neck, arms and legs.
- Knee Guards - Anatomically shaped, 3-D knee/shin guards for superior protection.
- Wave flex panels in the hollow of arms and legs for superior mobility.
- Two expandable POWER POCKETS on each leg.
- Seamless design in the crotch area, where wrinkling can cause excessive wear.
- Front gusseted neck zipper for surface comfort.
- Polyurethane reinforced shoulders for superior abrasion resistance.
- Chill Guard - Under the dry zip, it keeps body heat in and also keeps any undergarments out of the zipper.
- H1 HAVS hood (included) features a 5/7mm double layered protection and glide skin seals for the neck and face.
- A Seat that Grips – Polyurethane embossing in the back provides a non-slip grip and integrated abrasion protection.
- Each suit is tested by an overpressure check.



FEATURES AND DETAILS



ANATOMICAL SCULPTING
Pre-bent arms and legs provide a perfect anatomical fit.



HEAVY DUTY DRY ZIPPER
Provides maximum protection for your semi-drysuit.



POWER POCKETS
Dual expandable pockets to organize the gear you need.



DOUBLE SEALS
Generous double seals made from glide skin neoprene with zipper at arms and legs reduces water exchange.



KNEE GUARDS
Anatomically shaped, 3-D knee/shin guards for hard-core protection, without compromising comfort and flexibility.



REFLECTOR
High Visibility reflective logo on the sleeves and the neck.



CHILL GUARD
Keeps body heat in and your undergarments out of the zipper for trouble free operation.



A SEAT THAT GRIPS
Polyurethane embossing provides a non-slip grip and abrasion protection.



SHOULDER ARMOR
Padded wear resistant shoulders - finally a suit that can take as much as you can.



TOUGHTEX
The best way to armor your suit.



COMFORT ZIPPER
Fully gusseted "comfort Zipper" to relieve stress on the surface.



INCLUDES H1 HAVS HOOD
A 5/7mm vented I-span hood is included and fits underneath the warmneck collar. With glide skin seals.

US ITEM:

Male:
WP-SD COMBAT7M

Female:
WP-SD COMBAT7F

AVAILABLE SIZES:

Male:
STANDARD: S, M, ML, L, XL, 2XL
TALL: MT, MLT, LT

Female:
STANDARD: S, M, ML, L

ACCESSORIES



H1 Hood 3/5, 5/7, 5/10mm

- 3-D shaped
- Glideskin seal
- HAVS system
- I-Span superstretch nylon
- Bonded Hi-Quality Nylon thread



H1 Icehood 2mm

A One Size Fits All stretchy "over-hood" that covers all exposed skin. Holes for mask and regulator can be trimmed. Also provides excellent protection against Jellyfish in infested waters.



**G1 5mm 5-finger
G1 5mm 3-finger
G1 7mm 3-finger Semidry**

- 3-D shaped
- Glideskin seal
- Pre bent fingers
- Extra long YKK zipper
- Palm Antislip grip
- I-Span superstretch nylon
- Bonded Hi-Quality Nylon thread



B1 Boots

6.5mm semi-dry boots with an extra long zipper for easy donning. The heels and toes are strengthened and the boot has an angled design for less stress while finning.

WP Silicone NeckSeal



WP Silicone WristSeal

THE CHALLENGE

Does the "Perfect Drysuit" exist?

Waterproof spent three years analyzing the problem, material sourcing and intense testing to find the answer to the perfect drysuit, the patented D1 Hybrid. The D1 is the world's first Insulated Constant Volume Drysuit.

Insulation. It is all a matter of distance and to keep the insulating air between you and the cold water. The Patented 3-D Mesh Liner works like a thermos. It creates a Constant Insulation Volume, C.I.V., enhancing warmth dramatically.

Ventilation. The Patented 3-D Mesh Inner Lining provides unrestricted airflow and does not trap air. It makes buoyancy control easy to master and controls the inner climate. After a dive it dries quickly and efficiently.

Condensation. The 3-D Mesh Inner Lining acts as a one-way vapor barrier, it keeps the moist air away from your body. As a result, you will feel dry and warm. The 3-D Mesh Lining does not absorb any liquid and will stay dry.

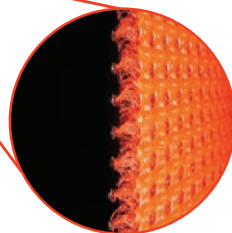
Pressure Distribution. The 3-D Mesh provides real pressure distribution and keeps the distance constant to the outer shell. This virtually eliminates squeeze and cold spots.

Fixed Lining. The 3-D Lining is fixed to the suit. This design allows for a slimmer fitting suit. No obstacles when donning. No overheating on land. It can be removed for cleaning or maintenance easily.

Dress code - light. There is no need for heavy undergarments, even in the coldest water since the insulation is built into the D1 suit.

3-D Mesh Inner Lining

- Provides a constant distance to the outer shell
- Resists pressure and squeeze
- Has a soft cushioning effect
- High shock absorption
- Excellent recovery
- Very low weight
- Fantastic forming and contour flow
- Provides unrestricted airflow



FEATURES AND DETAILS



ANATOMICAL SCULPTING
All critical parts, like the arms, legs and torso areas have been anatomically designed to ease movement.



WP SILICONE WRIST SEALS
Waterproof's new oval wrist ring quick connector for our silicone wrist seals. The D1 is equipped as standard.



WARMNECK
The unique warmneck solution from Waterproof with water drain valves and molded velcro tabs.



ELASTIC WAISTBAND
Expandable elastic waistband in both front and back.



HEAVY DUTY ZIPPER
Heavy Duty Dry Zipper with cover. Provides maximum protection of your dry zipper.



REFLECTOR
High visibility is ensured by the reflective label.



WP SILICONE NECK SEAL
The NeckSeal is fixed to the suit with a unique quick connector neck-ring. Easy to change.



CHILL GUARD
Keeps your body heat in and your undergarment out of the zipper for free operation.



ANATOMICAL KEVLAR REINFORCED BOOT
Angled for the best mix of durability and performance. Molded Fin Strap Anchor.



A SEAT THAT GRIPS
Polyurethane embossing provides a non-slip grip and abrasion protection.



WARM NECK VALVE
Drains the neck seal area when you surface.



APP
Advanced Performance Program design.



KEVLAR KNEE PADS
Kevlar Knee Reinforcement made of Schoeller® "Keprtec" Military Grade Kevlar.



DUAL CONVERTIBLE POWER POCKETS
Expandable large capacity power pockets with accessory double D-Rings.



THE 3-D INNER LINING
The integrated patented 3-D Mesh Inner Lining includes mesh suspenders.



MOLDED VELCRO TABS
TPU (eco) tabs with molded velcro hooks, stick only to the assigned Velcro part.



INCLUDES H1 HAVS HOOD
A 5/7mm vented I-Span hood is included and fits underneath the warmneck collar. With glide skin seals.



INCLUDES DRY BAG
A Waterproof 1000 CORDURA bag is also supplied as standard, which can be carried as a backpack.



INCLUDES SPARE SILICONE SEALS
One spare silicone wrist seal and one silicone neck seal is included with the suit.

US ITEM:

WP-D1M (Male)

AVAILABLE SIZES:

Male:
STANDARD: S, M, ML, L, XL, 2XL
TALL: MLT, LT, XLT, 2XLT

ACCESSORIES



H1 Hood 3/5, 5/7, 5/10mm

- 3-D shaped
- Glideskin seal
- HAVS system
- I-Span superstretch nylon
- Bonded Hi-Quality Nylon thread



H1 Icehood 2mm

A One Size Fits All stretchy "over-hood" that covers all exposed skin. Holes for mask and regulator can be trimmed. Also provides excellent protection against Jellyfish in infested waters.



**G1 5mm 5-finger
G1 5mm 3-finger
G1 7mm 3-finger Semidry**

- 3-D shaped
- Glideskin seal
- Pre bent fingers
- Extra long YKK zipper
- Palm Antislip grip
- I-Span superstretch nylon
- Bonded Hi-Quality Nylon thread



WP Silicone Seals

- 100 % UV and Ozone resistant
- Extremely stretchable
- Enhanced durability
- No latex allergy
- No maintenance
- Easy donning and doffing
- Extremely fast mounting
- Permanent Interior Glide Coating
- Safety Ridge
- Fits SI-Tech, Polar Bear and Viking ring systems



BodyTec Undergarment

- 280 gram polyester/spandex
- 4 piece set
- Storage bag
- Recommended undergarment for use with D1 Hybrid



WarmTec / WarmTec HD

- 200g or HD 300g
- Elasticized waist
- Mesh shoulders
- Integrated hood
- Ventilation zippers
- Teflon coated zippers



THE LEGEND

The D7 PRO, a blend of technical features, style and versatility previously unrealized in a traditional drysuit. The D7 PRO is the preferred drysuit choice for divers who appreciate quality, style and performance.

D7 PRO Features:

- Front entry, Trilaminate design for easy self-donning and superior performance.
- ISS – Integrated Silicone Seals and Quick Cuff System.
- Adjustable torso system with suspenders.
- Warm Neck Valve – An improved warm neck design with the addition of a double valve for better draining.
- Two expandable POWER POCKETS on each leg.
- Kevlar Knee Pads - Schoeller Kevlar Knee Reinforcement made of Schoeller® “Keprotect” Military Grade Kevlar.
- Seamless design in the under arm and crotch area, where wrinkling can cause excessive wear.
- Crotch panel in heavy-duty Cordura and crotch strap.
- Armored Dry Zipper - A heavy-duty zippered Cordura cover protects the self-entry dry zipper.
- Chill Guard - Under the dry zip, it keeps body heat in and also keeps your undergarments out of the zipper.
- H1 HAVS hood (included) features a 7mm double layered protection and glide skin seals for the neck and face.
- Kevlar anatomically cut boots to minimize ankle/calf stress and ensure ultimate strength and flexibility.
- A Seat that Grips – Polyurethane embossing in the back provides a non-slip grip and integrated abrasion protection.
- Form Molded Velcro Tabs.
- Each suit is tested by an overpressure check.
- A Waterproof 1000 CORDURA drybag is standard.
- SI-TECH Valves - swivelling inlet valve and adjustable automatic outlet valve.

FEATURES AND DETAILS



WARMNECK
The unique warmneck solution from Waterproof with water drain valves and molded velcro tabs.



WARM NECK VALVE
Drains the neck seal area when you surface.



KEVLAR KNEE PADS
Schoeller Kevlar Knee Reinforcement made of Schoeller® "Keprotect" Military Grade Kevlar.



WP SILICONE NECK SEAL
The NeckSeal is fixed to the suit with a unique quick connector neck-ring. Easy to change.
(D1 Hybrid shown)



ANATOMICAL SCULPTING
All critical parts, like the arms, legs and torso areas have been anatomically designed to ease movement.



A SEAT THAT GRIPS
Polyurethane embossing provides a non-slip grip and abrasion protection.



WP SILICONE WRIST SEALS
Waterproof's new oval wrist ring quick connector for our silicone wrist seals.
(D1 Hybrid shown)



MOLDED VELCRO TABS
TPU (eco) tab with molded velcro hooks, sticks only to the assigned Velcro part.



ANATOMICAL KEVLAR REINFORCED BOOT
Angled for the best mix of durability and performance. Molded Fin Strap Anchor.



TELESCOPING TORSO
Suspenders and the adjustable torso system allows the diver to fit the suit to his preference.



APP
Advanced Performance Program design.



INCLUDES H1 HAVS HOOD
A 5/7mm vented I-Span hood is included and fits underneath the warmneck collar. With glide skin seals.



HEAVY DUTY ZIPPER
Heavy Duty Zippered Cover. Provides maximum protection of your dry zipper.



DUAL CONVERTIBLE POWER POCKETS
Expandable large capacity power pockets with accessory double D-Rings.



REFLECTOR
High Visibility reflective logo on the sleeves and the neck.



INCLUDES DRY BAG
A Waterproof 1000 CORDURA bag is also supplied as standard, which can be carried as a backpack.

US ITEM:

WP-D7M-ISS (Male)

AVAILABLE SIZES:

Male:

STANDARD: S, M, ML, L, XL, 2XL

ACCESSORIES



H1 Hood 3/5, 5/7, 5/10mm

- 3-D shaped
- Glideskin seal
- HAVS system
- I-Span superstretch nylon
- Bonded Hi-Quality Nylon thread



H1 Icehood 2mm

A One Size Fits All stretchy "over-hood" that covers all exposed skin. Holes for mask and regulator can be trimmed. Also provides excellent protection against Jellyfish in infested waters.



**G1 5mm 5-finger
G1 5mm 3-finger
G1 7mm 3-finger Semidry**

- 3-D shaped
- Glideskin seal
- Pre bent fingers
- Extra long YKK zipper
- Palm Antislip grip
- I-Span superstretch nylon
- Bonded Hi-Quality Nylon thread



WP Silicone Seals

- 100 % UV and Ozone resistant
- Extremely stretchable
- Enhanced durability
- No latex allergy
- No maintenance
- Easy donning and doffing
- Extremely fast mounting
- Permanent Interior Glide Coating
- Safety Ridge
- Fits SI-Tech, Polar Bear and Viking ring systems



BodyTec Undergarment

- 280 gram polyester/spandex
- 4 piece set
- Storage bag



WarmTec / WarmTec HD

- 200g or HD 300g
- Elasticized waist
- Mesh shoulders
- Integrated hood
- Ventilation zippers
- Teflon coated zippers



THE LEGEND

Throughout our 25+ years of Arctic diving, we have found nothing that can match the 3.5mm Special Hi-Dense SD Toughtex neoprene we use for the D10 PRO drysuit. It's plain Tough.

D10 PRO Features:

- Laminated SD Toughtex nylon coating on 3.5 mm special Hi-Dense neoprene.
- Anatomic Sculpting – with 3-D sculpted arms and legs the D10 PRO provides an anatomical fit designed for ease of movement.
- ISS Model – Integrated Silicone Seals and Quick Cuff System available in Male and Female sizes.
- Latex Model – Standard latex seals available in Male and Female sizes.
- Knee Guards - Anatomically shaped, 3-D knee/shin guards for superior protection.
- Warm Neck Valve – An improved warm neck design with the addition of a double valve for better draining.
- Two expandable POWER POCKETS on each leg.
- Seamless design in the under arm and crotch area, where wrinkling can cause excessive wear.
- Crotch panel in heavy-duty Cordura.
- Armored Dry Zipper - A heavy-duty zippered Cordura cover protects the self-entry dry zipper.
- Chill Guard - Under the dry zip, it keeps body heat in and also keeps your undergarments out of the zipper.
- H1 HAVS hood (included) features a 7mm double layered protection and glide skin seals for the neck and face.
- Kevlar anatomically cut boots to minimize ankle/calf stress and ensure ultimate strength and flexibility.
- A Seat that Grips – Polyurethane embossing in the back provides a non-slip grip and integrated abrasion protection.
- Form Molded Velcro Tabs.
- Each suit is tested by an overpressure check.
- A Waterproof 1000 CORDURA bag is standard.
- SI-TECH Valves - swivelling inlet valve and adjustable automatic outlet valve.

FEATURES AND DETAILS



ANATOMICAL SCULPTING
Pre-bent arms and legs provide a perfect anatomical fit.



WP SILICONE WRIST SEALS
Waterproof's new oval wrist ring quick connector for our silicone wrist seals. (D1 Hybrid shown)



WP SILICONE NECK SEAL
The NeckSeal is fixed to the suit with a unique quick connector neck-ring. Easy to change. (D1 Hybrid shown)



SHOULDER ARMOR
Padded wear resistant shoulders - finally a suit that can take as much as you can.



HEAVY DUTY ZIPPERED COVER
Provides maximum protection of your dry zipper.



REFLECTOR
High Visibility reflective logo on the sleeves and the neck.



CHILL GUARD
Keeps body heat in and your undergarments out of the zipper for trouble free operation.



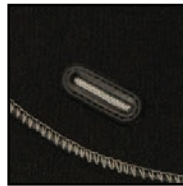
MOLDED VELCRO TABS
New TPU (eco) tab with molded velcro hooks, sticks only to the assigned Velcro part.



ANATOMICAL KEVLAR REINFORCED BOOT
Angled for the best mix of durability and performance. Molded Fin Strap Anchor.



A SEAT THAT GRIPS
Polyurethane embossing provides a non-slip grip and abrasion protection.



WARM NECK VALVE
Drains the neck seal area when you surface.



INCLUDES H1 HAVS HOOD
A 5/7mm vented I-span hood is included and fits underneath the warmneck collar. With glide skin seals.



KNEE GUARDS
Anatomically shaped, 3-D knee/shin guards for hard-core protection, without compromising comfort and flexibility.



POWER POCKETS
Dual expandable pockets to organize the gear you need.



TOUGHTEX
The best way to armor your suit.



INCLUDES DRY BAG
A Waterproof 1000 CORDURA bag is also supplied as standard, which can be carried as a backpack.

US ITEM:

Latex Seals:
WP-D10M (Male)
WP-D10F (Female)

Silicone Seals:
WP-D10M-ISS (Male)
WP-D10F-ISS (Female)
Available Fall 2012

AVAILABLE SIZES:

Male:
STANDARD: S, M, ML, L, XL, 2XL
TALL: MLT, LT, XLT
SHORT PLUS: SS+, MS+, LS+, XLS+, 2XLS+

Female:
STANDARD: XS, S, M, ML, L, XL, 2XL
TALL: MLT
SHORT PLUS: MS+, LS+
PLUS: M+, L+

ACCESSORIES



H1 Hood 3/5, 5/7, 5/10mm

- 3-D shaped
- Glideskin seal
- HAVS system
- I-Span superstretch nylon
- Bonded Hi-Quality Nylon thread



H1 Icehood 2mm

A One Size Fits All stretchy "over-hood" that covers all exposed skin. Holes for mask and regulator can be trimmed. Also provides excellent protection against Jellyfish in infested waters.



**G1 5mm 5-finger
G1 5mm 3-finger
G1 7mm 3-finger Semidry**

- 3-D shaped
- Glideskin seal
- Pre bent fingers
- Extra long YKK zipper
- Palm Antislip grip
- I-Span superstretch nylon
- Bonded Hi-Quality Nylon thread



WP Silicone Seals

- 100 % UV and Ozone resistant
- Extremely stretchable
- Enhanced durability
- No latex allergy
- No maintenance
- Easy donning and doffing
- Extremely fast mounting
- Permanent Interior Glide Coating
- Safety Ridge
- Fits SI-Tech, Polar Bear and Viking ring systems



BodyTec Undergarment

- 280 gram polyester/spandex
- 4 piece set
- Storage bag



WarmTec / WarmTec HD

- 200g or HD 300g
- Elasticized waist
- Mesh shoulders
- Integrated hood
- Ventilation zippers
- Teflon coated zippers

An underwater scene featuring a diver in the lower-left quadrant, illuminated by a bright flashlight beam. The water is dark with a greenish tint, and a large, bright light source is visible in the upper-middle section, creating a strong contrast and casting long shadows. The diver is wearing a full diving suit and a tank, and is looking towards the camera. The overall atmosphere is mysterious and dramatic.

ACCESSORIES

PRODUCT SUMMARY

An innovative glove collection with new materials and technical features that set it apart from the competition. Building on over 25 years of experience in the design and manufacturing of extreme exposure products, Waterproof set out to redefine the future of gloves.

The body reacts to cold and heat by adjusting the blood stream to the external parts of the body, like hands, fingers and feet. "White Fingers" is a common condition and a proof for this ability to direct the blood flow. If you add restriction and squeeze into the equation those conditions can be worsened. Waterproof's G1 Glove series is constructed with all that in mind. Better fit, enhanced dexterity, less restriction and squeeze.



ANTI-SLIP GRIP
Polyurethane embossing provides a non-slip grip and abrasion protection.



GLOVE GRIP TAB
Good grip at the right place. A perfect help when putting on the second glove.



ID-PLATE
Stylish place to put your name. Easy to recognize your gloves.



G1 7mm 3-finger Semi-Dry

Our pressure tested 7mm Semi-Dry Polar Evolved Glove features a 3mm internal seal to keep your hands dry and warm.

- 3-D shaped
- Pre bent fingers
- Glideskin seal
- Extra long YKK zipper
- Anti-slip grip
- I-Span super stretch nylon
- Bonded Hi-Quality Nylon thread
- Reflective logo
- ID-Plate

Sizes: XS, S, M, L, XL, XXL
US Item: WP-G1-73



G1 5mm 3-finger

This is the 5mm 3-finger version of the Semi-Dry glove from Waterproof.

- 3-D shaped
- Pre bent fingers
- Glideskin seal
- Extra long YKK zipper
- Anti-slip grip
- I-Span super stretch nylon
- Bonded Hi-Quality Nylon thread
- Reflective logo
- ID-Plate

Sizes: XS, S, M, L, XL, XXL
US Item: WP-G1-53



G1 3mm | 5mm 5-finger

This stylish glove features a glide skin interior and a long zipper for easy donning. Available in 3mm and 5mm versions.

- 3-D shaped
- Pre bent fingers
- Glideskin seal
- Extra long YKK zipper
- Anti-slip grip
- I-Span super stretch nylon
- Bonded Hi-Quality Nylon thread
- Reflective logo
- ID-Plate

Sizes: XS, S, M, L, XL, XXL
US Item: WP-G1-3 (3mm)
US Item: WP-G1-5 (5mm)



G1 1.5mm 5-finger

Stretch neoprene with wave flex panels and Amara leather palm.

- 3-D shaped
- Velcro closing
- Anti-slip grip
- I-Span super stretch nylon
- Bonded Hi-Quality Nylon thread

Sizes: XS, S, M, L, XL, XXL
US Item: G1-1.5

H1 HOODS



H1 5/10mm Polar Evolved

An extra warm hood developed for the polar regions. Still extremely comfortable because of the flexible 5mm neoprene around the neck.

- 3-D shaped anatomical design
- Glideskin seal
- HAVS system (double vents)
- I-Span superstretch nylon
- Bonded Hi-Quality Nylon thread
- Reflective logo

Sizes: XS, S, M, ML, L, XL, XXL
US Item: WP-H1-5/10HAV



H1 3/5 and 5/7mm with BIB

- 3-D shaped anatomical design
- Glideskin seal in 3mm or 5mm
- HAVS system (double vents)
- I-Span superstretch nylon
- Bonded Hi-Quality Nylon thread
- Reflective logo

Sizes: XS, S, M, ML, L, XL, XXL
US Item: WP-H1-3/5HAV (3/5mm)
US Item: WP-H1-5/7HAV (5/7mm)



H1 3/5 and 5/7mm without BIB

- 3-D shaped anatomical design
- Glideskin seal in 3mm or 5mm
- HAVS system (double vents)
- I-Span superstretch nylon
- Bonded Hi-Quality Nylon thread
- Reflective logo

Sizes: XS, S, M, ML, L, XL, XXL
US Item: WP-H1-3/5 (3/5mm)
US Item: WP-H1-5/7 (5/7mm)



H1 ICE HOOD

A 2mm one size fits all "ice-hood" that covers all exposed skin. Holes for mask and regulator can be trimmed as required. Also provides excellent protection against Jellyfish in infested waters.

Sizes: One-size
US Item: WP-H1ICE

PRODUCT SUMMARY

The body reacts to cold and heat by adjusting the blood stream to different parts of the body, like hands, fingers and feet. But the body can not adjust the blood flow to your head. This is to ensure brain function at all times. The colder it gets, the more heat you lose from the head by radiation, or by conduction in the water. You stay warmer with an effective hood.

Waterproof H1 hoods including the unique HAVS (Hood Air Venting System) are constructed with these scientific facts in mind and are proven to keep you warmer when you need it most. That is what we refer to as "Facing Reality".



B1 BOOTS

PRODUCT FACTS

Keeping your feet protected from cold is essential for overall warmth, your mother told you so didn't she? Waterproof keeps Mom and your feet happy by offering a boot range that is built for extreme conditions.

Tough 6.5mm semi-dry boot with an extra long zipper for easy donning. The heels and toes are strengthened and the boot has an angled design for less stress while finning.

- Angled footbed for less strain
- 3-D shaped
- 6.5mm Neoprene
- Fin strap ridge
- Glideskin seal
- Extra long YKK Vislon zipper
- Zipper, gusset and waterproofed
- Rubber caps at heels and toes
- HexTex Inner lining
- Boot Grip Tab for easy donning
- Bonded Hi-Q Nylon thread
- ID-Plate
- Zipper pull tab
- Color: Black

Sizes: 2XS, XS, S, M,
ML, L, XL, 2XL
US Item: WP-B1



B1



BOOT GRIP TAB
Good grip at the right place.
A perfect help when
donning the boots.



ID-PLATE
Convenient and stylish
place to personalize your
boots.



B2 BOOT

- 6.5 mm Neoprene
- Zipper, underlaid with neoprene to minimize water exchange.
- Stitched-on seal cuff for semi-dry effect.
- Strengthened with rubber at toes and heels.
- Flexible profile sole
- Color: Black

Sizes: 2XS, XS, S, M, ML, L, XL, 2XL
US Item: WP-B2



B1 1.5mm SOCKS

Our neoprene socks are ideal for snorkeling and to protect your feet against abrasion. The extra long design makes them easy to don and doff.

Color: Black
Sizes: XS, S, M, L, XL
US Item: WP-B1SOCK

U1 UNDERVEST

PRODUCT SUMMARY

Waterproof coupled an anatomically sculpted 2 mm under vest to our trend setting next generation H1 3/5mm hood with HAVS technology.

Ideal for added warmth under the W1, W2 or W3 fullsuits.

Color: Black



U1 2/5mm HOODED VEST - MALE

Sizes: XS, S, M, ML, L, XL, XXL, 3XL/T+
US Item: WP-U12M



U1 2/5mm HOODED VEST - FEMALE

Sizes: XS, S, M, ML, L, XL, XXL
US Item: WP-U12F



PRODUCT SUMMARY

A vest that combines 5mm of superior grade neoprene with our special knitted I-span lining and featuring the H1 3/5mm HAVS hood technology.

This front zip vest is designed to blend and compliment our W1, W2, W3 and W30 wetsuits or can be used as a separate shorty.

Color: Black



W Series 5mm HOODED OVERVEST - MALE

Sizes: Standard, Tall, Plus available
US Item: WP-W2ICE5M



W Series 5mm HOODED OVERVEST - FEMALE

Sizes: Standard, Tall, Plus available
US Item: WP-W2ICE5F



UNDERGARMENTS

WARMTEC | WARMTEC HD

Our form fitting legs, waist and vented shoulders provide rapid response air exchange to accommodate the most demanding drysuit dives.

Our compressible fiber fill material also minimizes the space required for transport making this undergarment/surface wear an all around top performer for discriminating divers. Waterproof nylon shell with 200gr fiberfill. Also available in HD with 300gr fill.

- Durable water & wind resistant outer shell
- Compressible fiber technology
- Zippered "snug fit" legs to prevent air shifts
- Elasticized waist for tight form fit.
- Mesh shoulders to prevent air trapping.
- Integrated hood for cold surface intervals.
- Ventilation zippers in the arm pits.
- Teflon coated zippers close 4 convenient pockets.
- Compression storage bag for streamlined packing.
- Shell fabric: 100% Nylon Taffeta 210T PU silver coating, 70G in weight.
- Padding: 200gr or 300gr Soft polyester fiber with scald surface.
- 200g temperature range: 45-65°F
- 300g temperature range: Less than 50°F

Color: Black

Sizes: XS, S, M, ML, L, XL, XXL, 3XL



WARMTEC 200g
US Item: WP-WARMTEC

WARMTEC HD 300g
US Item: WP-WARMTECHD



BODYTEC

Our BodyTec 4 piece set is perfect for both use as surface underwear or sleepwear at the base camp and underwater thermal protection when diving. Either way the BodyTec provides excellent layering technology for the most demanding environments.

- 280g polyester/spandex fleece keeps you warm even when wet
- 4 piece set for maximum flexibility
- Extended tail on the shirt prevents "ride up" during the dive
- Easily packed in its own small storage bag for easy transport
- Great for moderate temperature use by itself or combine with our WarmTec undergarment for extreme protection
- Recommended for use with the D1 Hybrid drysuit.

Color: Black

Sizes: XS, S, M, L, XL, XXL

US Item: WP-BODYTEC

PRODUCT SUMMARY

Latex seals have been one of the most problematic items on a drysuit. You never know the condition of them until you open your dive bag. Not only are they easy to rip but they quickly break down from environmental factors such as UV rays, chemicals and more. Additionally, up to 17% of divers suffer from latex allergies. Waterproof's Silicone Seals have set a new industry standard.

Constructed of hypoallergenic medical grade silicone, Waterproof's seals have 40% more stretch, superior tear resistance, and offer enhanced comfort compared to latex. The seals also eliminate the need for talc or powder and divers with latex allergies can dive carefree knowing they are non-allergenic. The seals are highly durable and resistant to degradation by UV light, ozone or chemicals.

- Hypoallergenic medical grade silicone - no latex allergy
- 40% more stretch than latex seals
- Extreme durability – 100% UV, Ozone resistance
- Superior Tear Resistance
- Ease of Donning/Doffing – no talc or powder necessary
- Easy replacement as required
- Fits glove rings
- Extremely fast mounting
- Interior Glide coating
- Can be trimmed as required



WP SILICONE WRIST SEAL

Fits SI TECH, Polar Bear and Viking systems.
One size fits all, Color: Black, Orange

US Item:
WP-SILSEAL-M-BK (Black)
WP-SILSEAL-M-OR (Orange)



WP SILICONE NECK SEAL

Fits SI TECH, Polar Bear systems.
One size fits all, Color: Black, Orange

US Item:
WP-NECKSEAL-BK (Black)
WP-NECKSEAL-OR (Orange)



WRIST SEAL RING KIT

Includes wrist ring and seal ring, either round or oval. Oval is standard on D1 and D7.

US Item: WP-SITECHWRIST (Round)
US Item: WP-OVALWRIST (Oval)



NECK SEAL INSTALLATION KIT

Includes neck ring, spanner ring and spanner ring tool.

US Item: WP-SITECHNECK



SIZE CHARTS

Size CHARTS

MALE

TALL

Sizes	2XST	XST	ST	MT	ML/T	LT	XLT	2XLT	3XLT+
Height +/-1in	5'7"	5'7"	6'0"	6'0"	6'1"	6'2"	6'3"	6'4"	6'4"
Chest (5)	30"	31"	38"	39"	41"	43"	44"	46"	50"
Waist (6)	23"	25"	33"	35"	37"	39"	41"	43"	52"
Hips (7)	33"	35"	38"	39"	41"	43"	44"	46"	50"
Neck-Crotch (15)	29"	30"	33"	33"	34"	34"	34"	35"	37"
Neck-Wrist (8)	28"	29"	31"	31"	31"	32"	32"	32"	33"
Crotch-Ankle (16)	28"	29"	30"	31"	31"	31"	32"	32"	33"
Dry Suit Boot cm	-	24	28	29	29	29	30	30	31
Dry Suit Boot US	-	6-7	9.5-10.5	10.5-11	10.5-11	10.5-11	11.5-12	11.5-12	12-13

STANDARD

Sizes	XS	S	M	ML	L	XL	2XL
Height +/-1in	5'8"	5'9"	5'9"	5'10"	5'11"	6'0"	6'0"
Chest (5)	36"	38"	39"	41"	43"	44"	46"
Waist (6)	31"	33"	35"	37"	39"	41"	43"
Hips (7)	36"	38"	39"	41"	43"	44"	46"
Neck-Crotch (15)	31"	32"	32"	33"	33"	33"	34"
Neck-Wrist (8)	29"	29"	30"	30"	31"	31"	31"
Crotch-Ankle (16)	28"	28"	29"	29"	30"	30"	30"
Dry Suit Boot cm	26	27	27	28	28	29	30
Dry Suit Boot US	7-8	8.5-9	8.5-9	9.5-10.5	9.5-10.5	10.5-11	11.5-12

PLUS

Sizes	M+	ML+	L+	XL+	2XL+
Height +/-1in	5'9"	5'10"	5'11"	6'0"	6'0"
Chest (5)	43"	44"	46"	47"	49"
Waist (6)	42"	44"	46"	48"	50"
Hips (7)	42"	43"	45"	46"	48"
Neck-Crotch (15)	34"	34"	34"	35"	35"
Neck-Wrist (8)	30"	30"	31"	31"	31"
Crotch-Ankle (16)	29"	29"	30"	30"	30"
Dry Suit Boot cm	27	28	28	29	30
Dry Suit Boot US	8.5-9	9.5-10.5	9.5-10.5	10.5-11	11.5-12

SHORT+

Sizes	M SHORT+	ML SHORT+	L SHORT+	XL SHORT +	2XL SHORT+
Height +/-1in	5'6"	5'7"	5'8"	5'9"	5'9"
Chest (5)	43"	44"	46"	47"	49"
Waist (6)	42"	44"	46"	48"	50"
Hips (7)	42"	43"	45"	46"	48"
Neck-Crotch (15)	33"	33"	33"	34"	34"
Neck-Wrist (8)	29"	29"	29"	30"	30"
Crotch-Ankle (16)	27"	27"	28"	28"	28"
Dry Suit Boot cm	27	27	28	28	28
Dry Suit Boot US	8.5-9	8.5-9	9.5-10.5	9.5-10.5	9.5-10.5

PLEASE USE THE MEASUREMENT GUIDE TO SELECT AND FIND YOUR NEAREST FIT



Size CHARTS

SHORT

Sizes	S SHORT	M SHORT	L SHORT	XL SHORT
Height +/-1in	5'5"	5'6"	5'8"	5'9"
Chest (5)	38"	39"	43"	44"
Waist (6)	33"	35"	39"	41"
Hips (7)	38"	39"	43"	44"
Neck-Crotch (15)	31"	31"	32"	32"
Neck-Wrist (8)	28"	29"	29"	30"
Crotch-Ankle (16)	26"	27"	28"	28"

FEMALE

TALL

Sizes	2XST	XST	ST	MT	MLT	LT	XLT	2XLT	2XLT
Height +/-1in.	5'7"	5'7"	5'8"	5'9"	5'10"	5'10"	5'11"	6'4"	6'0"
Chest	30"	31"	33"	35"	36"	38"	39"	46"	41"
Waist	23"	25"	26"	28"	29"	30"	32"	43"	33"
Hips	33"	35"	36"	38"	39"	41"	43"	46"	44"
UpperThigh	20"	21"	22"	22"	23"	24"	25"	35"	26"
Neck-Crotch	29"	30"	30"	30"	31"	31"	31"	32"	32"
Neck-Wrist	28"	29"	29"	29"	30"	30"	31"	32"	31"
Crotch-Ankle	28"	29"	29"	29"	30"	30"	31"	30	31"
Dry Suit Boot cm	-	24	25	26	26	26	27	11.5-12	27
Dry Suit Boot US	-	6-7	7-8	8.5-9	8.5-9	8.5-9	9.5-10.5	9.5-10.5	9.5-10.5

STANDARD

Sizes	2XS	XS	S	M	ML	L	XL	2XL
Height +/-1in.	5'4"	5'5"	5'5"	5'6"	5'7"	5'8"	5'9"	5'9"
Chest	30"	31"	33"	35"	36"	38"	39"	41"
Waist	23"	25"	26"	28"	29"	30"	32"	33"
Hips	33"	35"	36"	38"	39"	41"	43"	44"
UpperThigh	20"	21"	22"	22"	23"	24"	25"	26"
Neck-Crotch	28"	29"	29"	30"	30"	30"	31"	31"
Neck-Wrist	27"	28"	28"	28"	29"	29"	30"	30"
Crotch-Ankle	26"	27"	27"	28"	28"	28"	29"	29"
Dry Suit Boot cm	-	24	24	25	26	26	27	27
Dry Suit Boot US	-	6-7	6-6.5	7-8	8.5-9	8.5-9	9.5-10.5	9.5-10.5

PLUS

Sizes	S+	M+	ML+	L+	XL+	2XL+
Height +/-1in.	5'5"	5'6"	5'7"	5'8"	5'9"	5'9"
Chest	36"	37"	39"	41"	42"	44"
Waist	28"	30"	31"	32"	34"	35"
Hips	39"	40"	42"	43"	45"	46"
UpperThigh	24"	25"	25"	25"	26"	26"
Neck-Crotch	30"	31"	31"	31"	32"	32"
Neck-Wrist	29"	29"	30"	31"	31"	31"
Crotch-Ankle	29"	29"	30"	31"	31"	31"
Dry Suit Boot cm	24	25	26	26	27	27
Dry Suit Boot US	6-7	7-8	8.5-9	8.5-9	9.5-10	9.5-10.5

PLEASE USE THE MEASUREMENT GUIDE TO SELECT AND FIND YOUR NEAREST FIT



Size CHARTS

SHORT+

Sizes	S SHORT+	M SHORT+	ML SHORT+	L SHORT+	XL SHORT+	2XL SHORT+
Height +/-1in.	5'3"	5'3"	5'4"	5'5"	5'6"	5'7"
Chest	36"	37"	39"	41"	42"	44"
Waist	28"	30"	31"	32"	34"	35"
Hips	39"	40"	42"	43"	45"	46"
UpperThigh	24"	25"	25"	25"	26"	26"
Neck-Crotch	30"	30"	30"	31"	31"	31"
Neck-Wrist	27"	27"	28"	28"	29"	29"
Crotch-Ankle	25"	26"	26"	26"	27"	27"
Dry Suit Boot cm	24	25	26	26	26	26
Dry Suit Boot US	6-7	7-8	8.5-9	8.5-9	8.5-9	8.5-9

SHORT

Sizes	S SHORT	M SHORT	L SHORT	XL SHORT
Height +/-1in.	5'3"	5'3"	5'5"	5'6"
Chest	33"	35"	38"	39"
Waist	26"	28"	30"	32"
Hips	36"	38"	41"	43"
Upper Thigh	22"	22"	24"	25"
Neck-Crotch	28"	29"	30"	30"
Neck-Wrist	27"	27"	28"	29"
Crotch-Ankle	25"	26"	26"	27"

ACCESSORIES

BOOTS

Sizes	XXS	XS	S	M	ML	L	XL	2XL
US Male	3-4	4.5-5	6-7	7-8	8-8.5	9-10.5	11-12	12-13
US Female	4-5	5.5-6.5	7-8	8-9	9-9.5	10-11.5	12-13	13-14
European Size	34/35	36/37	38/39	40/41	42	43/44	45/46	47/48
Centimeters +/-	20-21.5	22-23	24-24.5	25-26	27	27.5-28	28.5-29.5	30-30.5

HOODS

Sizes	XS	S	M	ML	L	XL	2XL
Head Circum. (3)	20"	20"	21"	22"	22"	23"	24"
Neck Circumference	13"	14"	14"	15"	16"	17"	19"

PLEASE USE THE MEASUREMENT GUIDE TO SELECT AND FIND YOUR NEAREST FIT



